



LA ESCALERUELA
Nacimiento de la Villa - Cortijo La Torre

LINEAL ROUTE **SL - A 22**
10,2 km

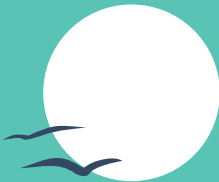
More information at:
Municipal Tourist Office
[Address] C/ Encarnación, 4A
Tl (0034) 952 70 25 05/ 952 70 83 05
<https://turismo.antequera.es>



ANTEQUERA
Directa a tu corazón



Antequera
Trails Network



LA ESCALERUELA Nacimiento de la Villa - Cortijo La Torre SL-A 22

Distance: 10.2 Km.
Start: *Nacimiento de la Villa* (river spring) next to the medium pool. Antequera
End: *Fuente de la Torre*. MA-438 road to *La Joya*. Antequera.
Kind of trail: Lineal route.
It is recommended to leave a car at the end of the route.
Outward walking time: 3 h
Difficulty: Average-Low.
Net gradient: 734 m.
Slope upward: 420 m.
Slope downward: 264 m.
Ground: Path and lane.
Surface: Earthy and rocky
Season: Autumn, Winter and Spring.



Linked or coincident routes:
-*Gran Senda de Málaga* GR 249.4 (Málaga Large Route). 4 Stages 1 and 2.
-European Route "Sierras Mediterráneas" .(Mediterranean Mountain ranges)- Gr7Stage 4 Antequera-Villanueva de Cauche.
-*Sendero Mozárabe de Santiago* (Mozarabic Way of St James 9) GR 245 Stage 3 Villanueva de la Concepción-Antequera.

Description: The trail goes from the *Nacimiento de la Villa* up to *Cortijo de la Torre* passing by the *Puerto de Escaleruela* mountain pass, within the boundaries of the *El Torcal* Natural Landscape, and it goes up to the *Cortijo de los Navazos*.

RECOMMENDATIONS FOR YOUR STAY IN THE COUNTRYSIDE

This Trails Network is included within the actions taken by the Antequera Town Hall to preserve the natural capital of the city as it is established in the Agenda 21 for the achievement of a sustainable development.

Do not throw any rubbish away or bury it. Please, take it with you until finding a rubbish bin. Also, it costs nothing to pick up the rubbish you might find in your way so we all contribute to improve our environment.

Respect and look after the fountains, rives and other watercourses. Please, do not dumping any kind of soap, detergent, polluting products or waste.

The flora and fauna are the real dwellers of nature so, please, do not pull up flowers, branches or disturb the fauna. In that way, all of us will enjoy watching them. Besides, remember that many of them are protected by Law.

Watch out for fire. Never build a fire. During the summer season it is forbidden to light a fire even in the places provided to do so. Please, take ready meals with you.

Do not camp at your whim. Respect the places provided to do that.

Respect the paths. Short cuts only damage the ground and build ravine beds which could make the original paths to fade away.

ALWAYS ACCOMPANIED
 PLEASE, RESPECT THE WATERCOURSES
 CAMPING ONLY IN PROVIDED AREAS
 PLEASE, RESPECT THE FLORA
 PLEASE, TAKE DRINKING WATER WITH YOU
 PLEASE, KEEP YOUR DOG ON A LEAD

PLEASE, FOLLOW THE PATHS
 CLOSED GATES
 PLEASE, TAKE THE LITTER AWAY
 NO MOTOR VEHICLES
 NO FIRES
 PLEASE, RESPECT THE FAUNA

MIDE

!

1

2

2

3

3

4

4

5

5

1

1

2

2

3

3

4

4

5

5

1

1

2

2

3

3

4

4

5

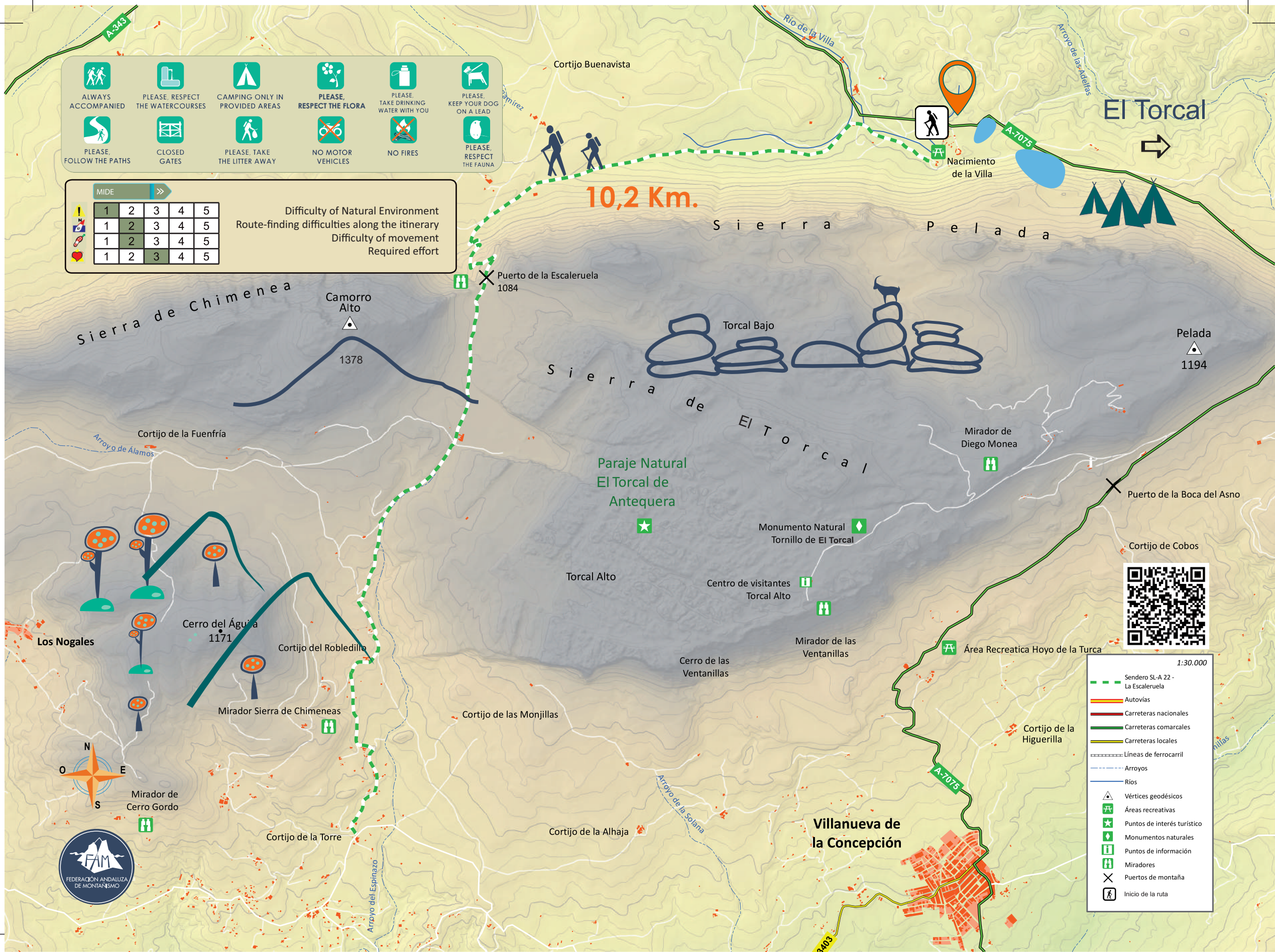
5

Difficulty of Natural Environment

Route-finding difficulties along the itinerary

Difficulty of movement

Required effort



1:30.000

SL-A 22 - La Escaleruela

Autovías

Carreteras nacionales

Carreteras comarcales

Carreteras locales

Líneas de ferrocarril

Arroyos

Ríos

Vértices geodésicos

Áreas recreativas

Puntos de interés turístico

Monumentos naturales

Puntos de información

Miradores

Puertos de montaña

Inicio de la ruta